

Add, Edit, and Delete Threats

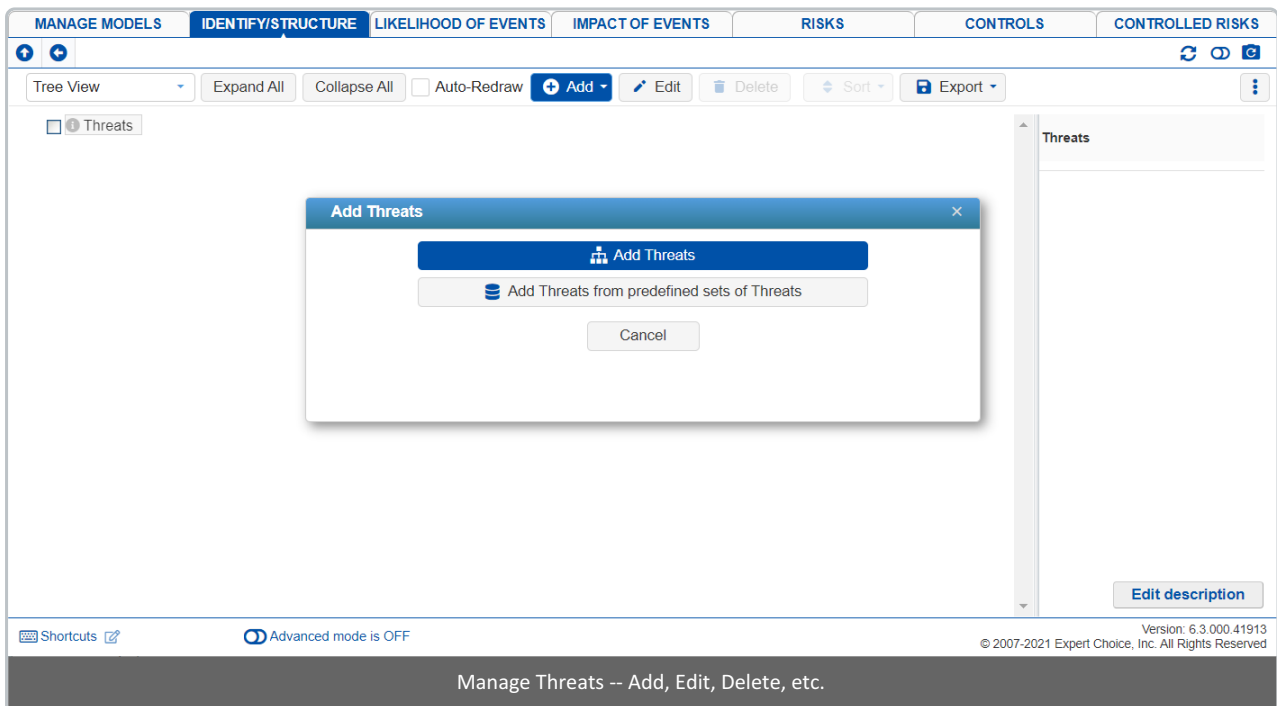
The Threats hierarchy can be created, viewed, and edited from any of the following pages:

- **IDENTIFY/STRUCTURE > IDENTIFY > Threats;** or
- **IDENTIFY/STRUCTURE > Threats > Hierarchy** or
- **LIKELIHOOD OF EVENTS > STRUCTURE > EVENTS SOURCES > Threats.**

In Riskion, we refer to **threats**, **causes**, **hazards**, and **sources** interchangeably. While they may have slightly different nuances depending on the context in which they are used, they serve the same purpose -- they are all threats of risk (for Risk Events) or sources of opportunity (for Opportunity Events).

The default wording can be defined on the Workgroup Template; or from Default Option Sets. You can also change the wording for each model on the Judgments Options page of the model.

Before adding Threats, we suggest you read how Riskion defines Threats -- [Riskion Taxonomy \(Risk Elements and Risk Measures\)](#).



Depending on the Default Option Sets wording used when creating a model, the overall statement will be shown, in this case, "Threat" and can be edited. A prompt to add threats will pop out as shown above.

Add Threats (same level or below)

You can add threats **below** the Threats node.

Additional elements (threats, sub-threats) can be added either at the same level of the currently selected node by pressing **Add Threats (same level)** button, or below the currently selected button, by pressing **Add Threats (level below)** button.

+ Add ▾

- Add Threats (level below)
- Add Threats (same level)
- Add Threats from predefined sets of Threats

Pressing either of the first two options above will open a dialog:

Add (Level Below) [Close]

Measure Events With Respect To	Categorical	Description	
Strengthening of Terrorists	<input type="checkbox"/>		
Lack of Intelligence Gathering and Sharing	<input type="checkbox"/>		
Severe Funding Pressures	<input type="checkbox"/>		
Ineffective Personnel Capabilities	<input type="checkbox"/>		
Inadequate Border Enforcement Technology	<input type="checkbox"/>		
Undeveloped Integrated Border Management Approach and Comm	<input type="checkbox"/>		
Inadequate Harmonization with Foreign Jurisdictions	<input type="checkbox"/>		
Lack of Political Will or Non-Partisanship to Address Issue	<input type="checkbox"/>		
Strengthening of Organized Crime Groups	<input type="checkbox"/>		

[Save] [Cancel]

Here you can either:

a) enter one or more elements, along with brief descriptions (a simple form of an information document which you can modify later using the Edit description or buttons). Adding one or more spaces before an element name will indicate that the element should be added at a lower level in the hierarchy.

b) The **Paste from Clipboard** button will paste elements that have been previously placed on the clipboard into the hierarchy. These elements can be placed on the clipboard in a variety of ways:

1. By copying from adjacent rows/columns in an Excel spreadsheet
2. By copying from adjacent row/s columns in a Word document
3. By copying from a tab delimited text file, where the tab is used to separate the element name from the element description.

The Threat and the threat names can be **edited** by selecting them and clicking the Edit button or by double-clicking the node name.

Checking the Categorical checkbox to the right of the threat will add a threat as a category. A category won't be part of the evaluation, it is only used to categorize or group similar threats. A category threat is shown with the **blue** font in the Threat hierarchy.

Add Threats from predefined sets of Threats

The **Add Threats from predefined sets of Threats** allows you to add new threats from predefined threats determined by

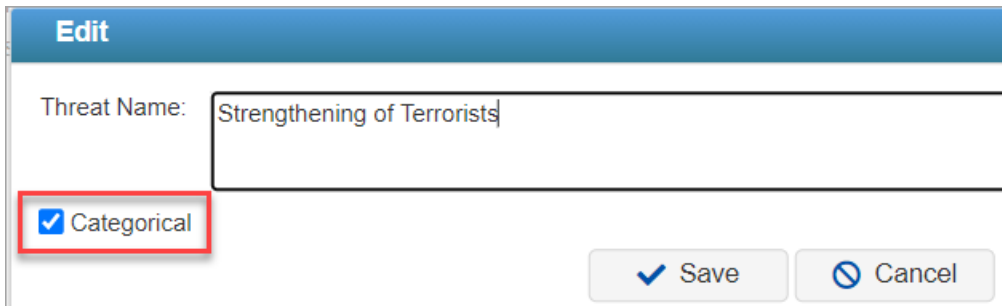
the site administrator.

Add/Edit Threat as Categorical

Threats can be defined as Categorical when you want to group threats of the same category. The category will serve as a container to the threats below it. Categorical threats will not be evaluated.

You can add a categorical attribute from the Add Threat modal and then check the categorical checkbox to the right of the categorical threat you want to add.

You can also edit an existing set threat by double-clicking on it and then checking the Categorical checkbox.



The screenshot shows an 'Edit' modal window. At the top, there is a blue header with the word 'Edit'. Below the header, there is a text input field labeled 'Threat Name:' containing the text 'Strengthening of Terrorists'. Below the input field, there is a checkbox labeled 'Categorical' which is checked. This checkbox is highlighted with a red rectangular box. At the bottom right of the modal, there are two buttons: 'Save' with a checkmark icon and 'Cancel' with a circular arrow icon.

Alternatively, you can right-click a threat and then select **Set as a Category**.



Delete Threats

You can **delete** one or more threats by selecting them and clicking the Delete button.

You can also right-click a threat to see a set of commands, and then select Delete.

HINT: It is advisable to [save a copy of the model](#) before deleting many elements in case you want to save a copy of your model before the deletion. You can also use the **Model Snapshots** feature to revert to what you had.

Threats right-click commands

Some commands already explained above and more are available by right-clicking a Threat node:



- Set as a Category - set a node as Category. If a node is currently a Category, this command will be Set as an Uncertainty.
 - Add Threats (level below) - add nodes below the selected node
 - Add Threats (same level) - add nodes same level as the selected node
 - Add Threats from predefined sets of Threats - Open the predefined sets modal
 - Edit - edit the selected node
 - Edit description - open the rich text editor to edit the description of the selected node
 - Delete - delete the selected node
 - Copy judgments - copy judgments of the selected node
 - Paste judgments - paste the copied judgments from another node to the selected node
 - Erase node-s judgments for all participants - delete the judgments of the selected node
-