

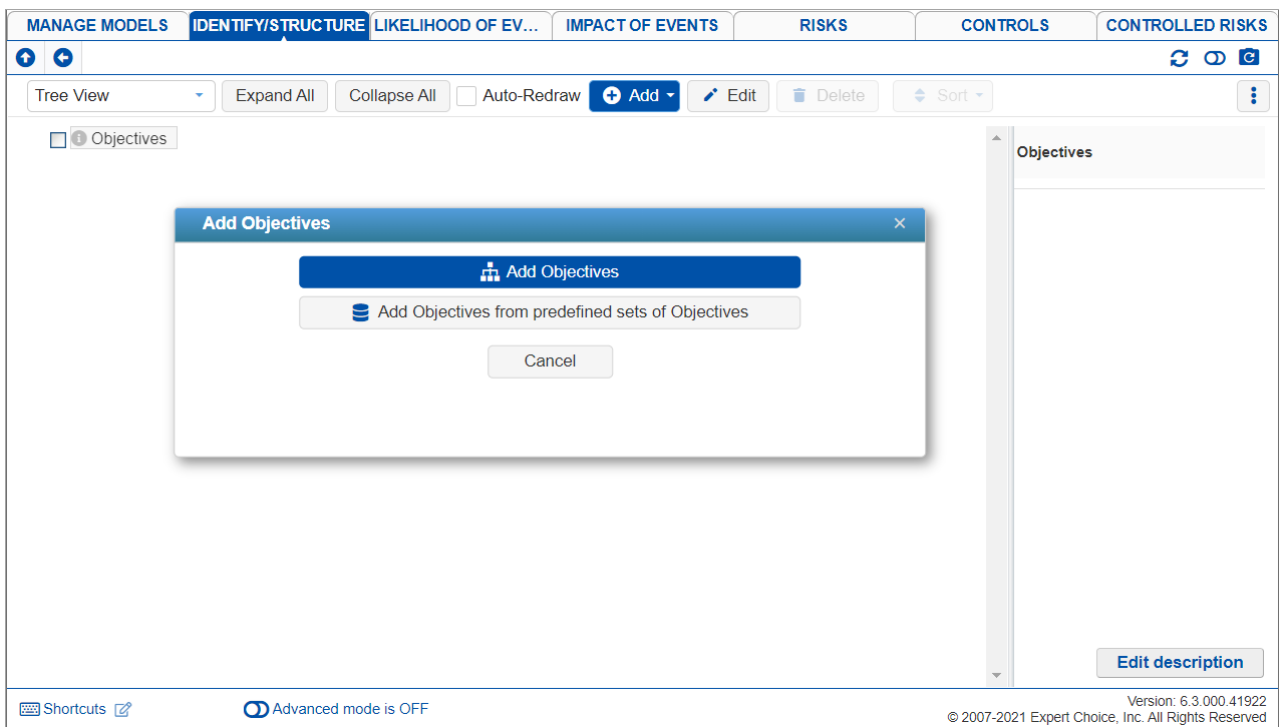
Add, Edit and Delete Objectives

The Objectives hierarchy can be created, viewed, and edited from any of the following pages:

- IDENTIFY/STRUCTURE > IDENTIFY > Objectives;
- IDENTIFY/STRUCTURE > OBJECTIVES > Hierarchy;
- IMPACT OF EVENTS > STRUCTURE > EVENTS OBJECTIVES > Objectives.

The default wording can be defined on the Workgroup Template; or from Default Option Sets. You can also change the wording for each model on the Judgments Options page of the model.

Before adding Objectives, we suggest you read how Riskion defines Objectives-- [Riskion Taxonomy \(Risk Elements and Risk Measures\)](#).



Depending on the Default Option Sets wording used when creating a model, the overall statement will be shown, in this case, "Objectives" and can be edited. A prompt to add objectives will pop-out as shown above.

Add Objectives (same level or below)

You can add objectives **below** the Objectives node.

Additional elements (objectives, sub-objectives) can be added either at the same level of the currently selected node by pressing **Add Objectives (same level)** button, or below the currently selected button, by pressing **Add Objectives (level below)** button.

+ Add ▾

- Add Objectives (level below)
- Add Objectives (same level)
- Add Objectives from predefined sets of Objectives

Pressing either of the first two options above will open a dialog:


Add (Level Below)
✕


+
📄

Measure Events With Respect To	Description	
Life Security		🗑
Economic Costs		🗑
Confidence in Government		🗑
Increase in Feeling of Security/Decrease of Fear		🗑
Confidence in the Financial Sector		🗑
Improvement of Social Services		🗑
Environmental Safety		🗑
US Citizen Jobs		🗑
Decrease of Consumer Fees / Cost of Goods		🗑

✓ Save
🔄 Cancel

Here you can either:

a) enter one or more elements, along with brief descriptions (a simple form of an information document which you can modify later using the Edit description or  buttons). Adding one or more spaces before an element name will indicate that the element should be added at a lower level in the hierarchy.

b) The **Paste from Clipboard**  button will paste elements that have been previously placed on the clipboard into the hierarchy. These elements can be placed on the clipboard in a variety of ways:

1. By copying from adjacent rows/columns in an Excel spreadsheet
2. By copying from adjacent row/s columns in a Word document
3. By copying from a tab delimited text file, where the tab is used to separate the element name from the element description.

The Objective and the objective names can be **edited** by selecting them and clicking the Edit button or by double-clicking the node name.

Add Objectives from predefined sets of Objectives

The **Add Objectives from predefined sets of Objectives** allows you to add new objectives from predefined objectives determined by the site administrator.

Delete Objectives

You can **delete** one or more objectives by selecting them and clicking the Delete button.

You can also right-click an objective to see a set of commands, and then select Delete.

HINT: It is advisable to [save a copy of the model](#) before deleting many elements in case you want to save a copy of your model before the deletion. You can also use the **Model Snapshots** feature to revert to what you had.

Objectives right-click commands

Some commands already explained above and more are available by right-clicking an Objective node:

- + Add Objectives (level below)
- + Add Objectives (same level)
- + Add Objectives from predefined sets of Objectives
- ✎ Edit
- ℹ Edit description
- 🗑 Delete
- 📄 Copy Judgments
- 📄 Paste Judgments
- 🗑 Erase node's judgments for all participants

- Add Objectives (level below) - add nodes below the selected node
 - Add Objectives (same level) - add nodes same level as the selected node
 - Add Objectives from predefined sets of Objectives - Open the predefined sets modal
 - Edit - edit the selected node
 - Edit description - open the rich text editor to edit the description of the selected node
 - Delete - delete the selected node
 - Copy judgments - copy judgments of the selected node
 - Paste judgments - paste the copied judgments from another node to the selected node
 - Erase node-s judgments for all participants - delete the judgments of the selected node
-