

Hierarchy

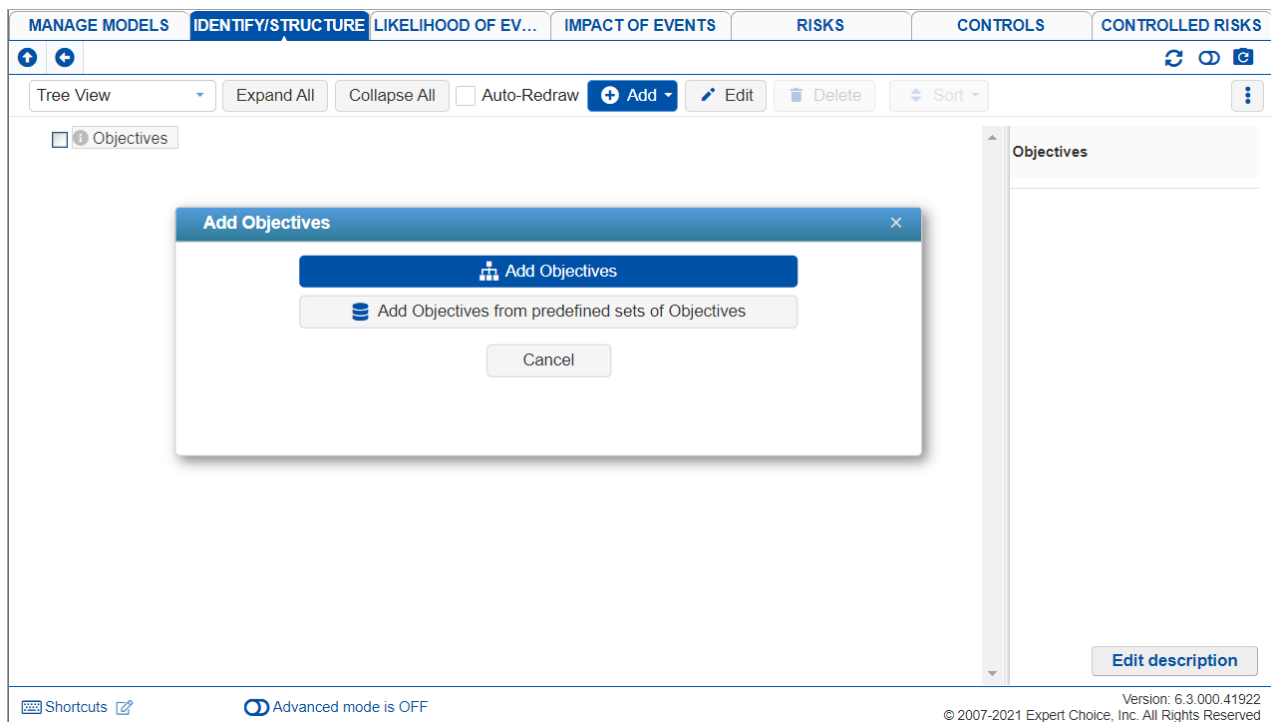
Add, Edit and Delete Objectives

The Objectives hierarchy can be created, viewed, and edited from any of the following pages:

- IDENTIFY/STRUCTURE > IDENTIFY > Objectives;
- IDENTIFY/STRUCTURE > OBJECTIVES > Hierarchy.
- IMPACT OF EVENTS > STRUCTURE > EVENTS OBJECTIVES > Objectives.

The default wording can be defined on the Workgroup Template; or from Default Option Sets. You can also change the wording for each model on the Judgments Options page of the model.

Before adding Objectives, we suggest you read how Riskion defines Objectives-- [Riskion Taxonomy \(Risk Elements and Risk Measures\)](#).



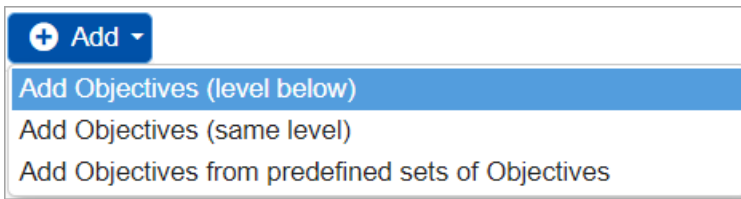
Depending on the Default Option Sets wording used when creating a model, the overall statement will be shown, in this case, "Objectives" and can be edited. A prompt to add objectives will pop-out as shown above.

Add Objectives (*same level or below*)

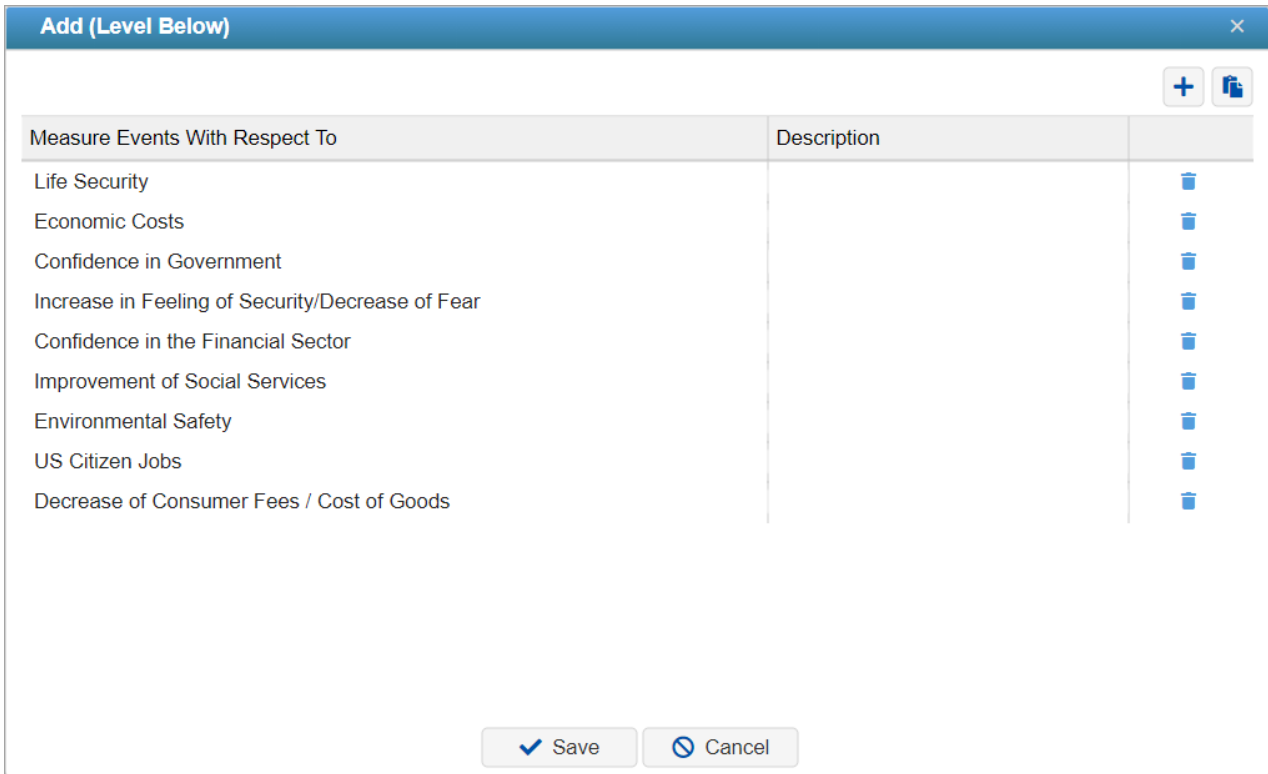
You can add objectives **below** the Objectives node.

Additional elements (objectives, sub-objectives) can be added either at the same level of the currently selected node by


pressing **Add Objectives (same level)** button, or below the currently selected button, by pressing **Add Objectives (level below)** button.




Pressing either of the first two options above will open a dialog:



Here you can either:

a) enter one or more elements, along with brief descriptions (a simple form of an information document which you can modify later using the Edit description or  buttons). Adding one or more spaces before an element name will indicate that the element should be added at a lower level in the hierarchy.

b) The **Paste from Clipboard**  button will paste elements that have been previously placed on the clipboard into the hierarchy. These elements can be placed on the clipboard in a variety of ways:

1. By copying from adjacent rows/columns in an Excel spreadsheet
2. By copying from adjacent row/s columns in a Word document
3. By copying from a tab delimited text file, where the tab is used to separate the element name from the element description.

The Objective and the objective names can be **edited** by selecting them and clicking the Edit button or by double-clicking the node name.

Add Objectives from predefined sets of Objectives

The **Add Objectives from predefined sets of Objectives** allows you to add new objectives from predefined objectives

determined by the site administrator.

Delete Objectives

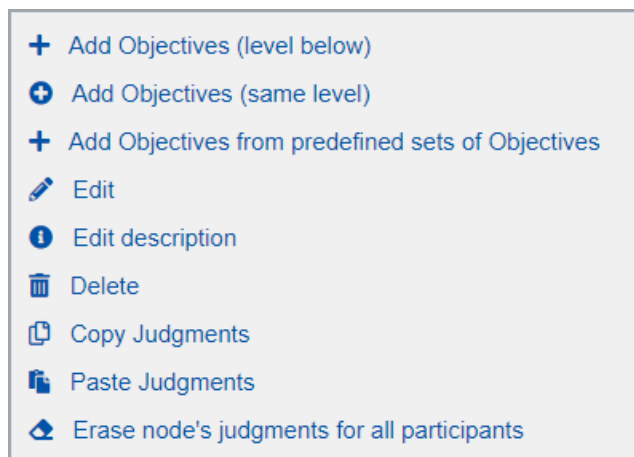
You can **delete** one or more objectives by selecting them and clicking the Delete button.

You can also right-click an objective to see a set of commands, and then select Delete.

HINT: It is advisable to [save a copy of the model](#) before deleting many elements in case you want to save a copy of your model before the deletion. You can also use the **Model Snapshots** feature to revert to what you had.

Objectives right-click commands

Some commands already explained above and more are available by right-clicking an Objective node:



- Add Objectives (level below) - add nodes below the selected node
- Add Objectives (same level) - add nodes same level as the selected node
- Add Objectives from predefined sets of Objectives - Open the predefined sets modal
- Edit - edit the selected node
- Edit description - open the rich text editor to edit the description of the selected node
- Delete - delete the selected node
- Copy judgments - copy judgments of the selected node
- Paste judgments - paste the copied judgments from another node to the selected node
- Erase node-s judgments for all participants - delete the judgments of the selected node

Sort (Re-order) Objectives

Elements can be moved or copied from one position/level in the hierarchy to another by drag/dropping to the desired position in the hierarchy.

In Tree View, you can move or copy a node from one position to another by dragging and dropping. Simply select a node and hold on to the left button of your mouse and then drag to the position you want the node to be moved/copied (you will see a blue arrow as a pointer). Once you release the mouse's left key, you will then see a dialog asking whether to copy or move the node. Select and click OK to confirm.

Tree View Expand All Collapse All Auto-Redraw

- [-] **Objectives**
 - [-] **Financial**
 - Loss of Customers**
 - Financial Loss**
 - Financial Liability Due to Accident**
 - [-] **Reliability, Availability, Maintainability**
 - Loss of Maintenance Efficiency**
 - Disruption/Damage to Service Line Infrastructure**
 - Repair to Service Line Infrastructure**
 - [-] **Performance**
 - Temporary Line Closure**
 - Loss of Reliability and Network Efficiency**
 - Loss of Wider Monitoring System Program Efficiency**
 - Loss of Train Service**
 - [-] **Human Factors**
 - Death**
 - Injury**
 - [-] **Safety**
 - Loss of Safety**
 - [-] **Public Relations**
 - Customer/Business Dissatisfaction with the Service/Network Efficiency**
 - Loss of Company Reputation**

You can also **sort** elements in the cluster below the **selected** objective or sub-objective by name ascending/descending:

Sort

- By Name Ascending
- By Name Descending

Sorting by name can be done both in Tree View and Hierarchy View.

HINT: You can use the **Model Snapshots** feature in case you want to revert to what you had before the sorting.

Expand, Collapse and Auto-Redraw the Objectives Hierarchy

Expand All will expand all branches of the hierarchy.

Collapse All will collapse the hierarchy and show only the goal and the first level of elements (objectives).

You can also expand/collapse **sections** of the hierarchy by clicking the same icons at the left of the objective node.

When the **Auto-Redraw** box is checked, clicking on the *name* of any element will not only expand the branches below the element but will automatically contract the branches in other parts of the hierarchy. This is useful to be able to focus on a part of the hierarchy, see all of its ancestries, but not be distracted from details in other parts of the hierarchy.

The screenshot shows a user interface for managing objectives. At the top, there is a control bar with a dropdown menu set to "Tree View", buttons for "Expand All" and "Collapse All", an unchecked checkbox for "Auto-Redraw", and a blue "Add" button. Below this is a tree view of objectives. The root node is "Objectives", which is expanded to show several main categories: "Financial", "Reliability, Availability, Maintainability", "Performance", "Human Factors", "Safety", and "Public Relations". Each category is further expanded to show its sub-objectives. For example, "Financial" includes "Loss of Customers", "Financial Loss", and "Financial Liability Due to Accident". "Reliability, Availability, Maintainability" includes "Loss of Maintenance Efficiency", "Disruption/Damage to Service Line Infrastructure", and "Repair to Service Line Infrastructure". "Performance" includes "Temporary Line Closure", "Loss of Reliability and Network Efficiency", "Loss of Wider Monitoring System Program Efficiency", and "Loss of Train Service". "Human Factors" includes "Death" and "Injury". "Safety" includes "Loss of Safety". "Public Relations" includes "Customer/Business Dissatisfaction with the Service/Network Efficiency" and "Loss of Company Reputation". Each node in the tree has a small square icon with a minus sign to its left, indicating it is expanded. A mouse cursor is visible over the "Disruption/Damage to Service Line Infrastructure" node.

View Objectives (Tree or Hierarchy)

Objectives can be viewed in **Tree View** or **Hierarchical View**. By default, the Tree View is displayed as shown below:

Tree View Auto-Redraw

- [-] Objectives
 - [-] Public Relations
 - Loss of Company Reputation
 - Customer/Business Dissatisfaction with the Service/Network Efficiency
 - [-] Financial
 - Loss of Customers
 - Financial Loss
 - Financial Liability Due to Accident
 - [-] Reliability, Availability, Maintainability
 - Loss of Maintenance Efficiency
 - Disruption/Damage to Service Line Infrastructure
 - Repair to Service Line Infrastructure
 - [-] Performance
 - Temporary Line Closure
 - Loss of Reliability and Network Efficiency
 - Loss of Wider Monitoring System Program Efficiency
 - Loss of Train Service
 - [-] Human Factors
 - Death
 - Injury
 - [-] Safety
 - Loss of Safety

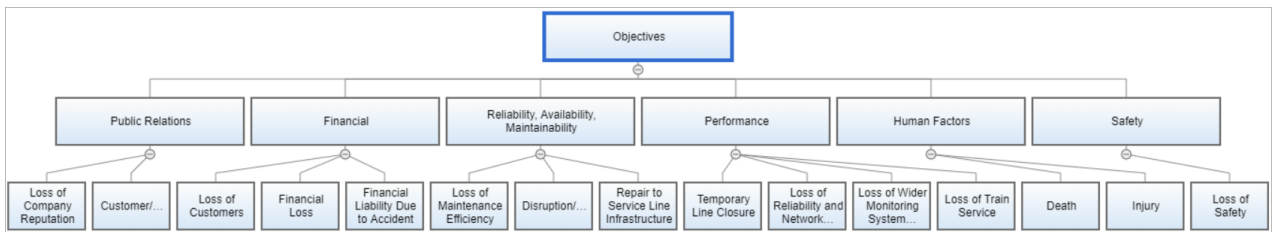
You can use the drop-down to select the Hierarchy View:

Tree View

Tree View

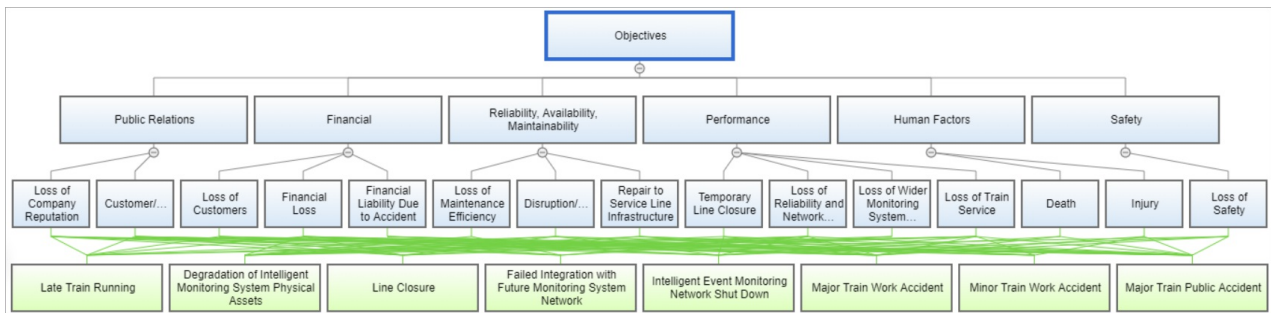
Hierarchy View

The Hierarchy View of Objectives is shown below:

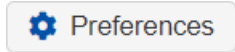


You can do similar actions such as adding objectives, editing, sort by name, and export as you can do in the Tree View.

Additionally, you can show/hide the Events in the Hierarchy view by checking the Show Events checkbox. The Events those with green boxes.



You can specify the rectangle length and width by clicking the gear icon



Preferences ✕

Rectangle Height [50] 20 200

Rectangle Width [75 .. 159] 20 500

HINT: For smaller screens, some of the options may be hidden. You may see the hidden options by clicking the ellipses icon at the top right.