

# Likelihood: Mixed

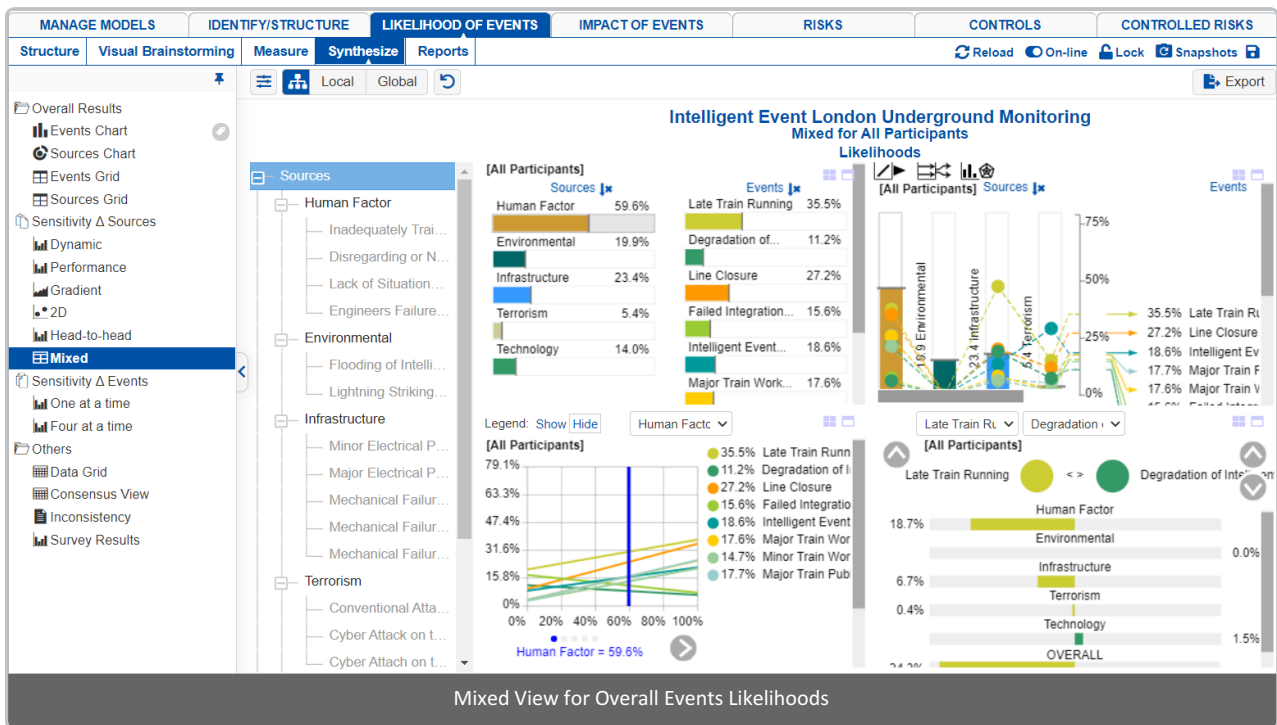
The Mixed screen for Likelihood displays the sensitivities and grids into one view:

- Dynamic Analysis
- Performance Analysis
- Gradient
- 2D plot
- Head to Head
- Events Grid
- Threats Grid

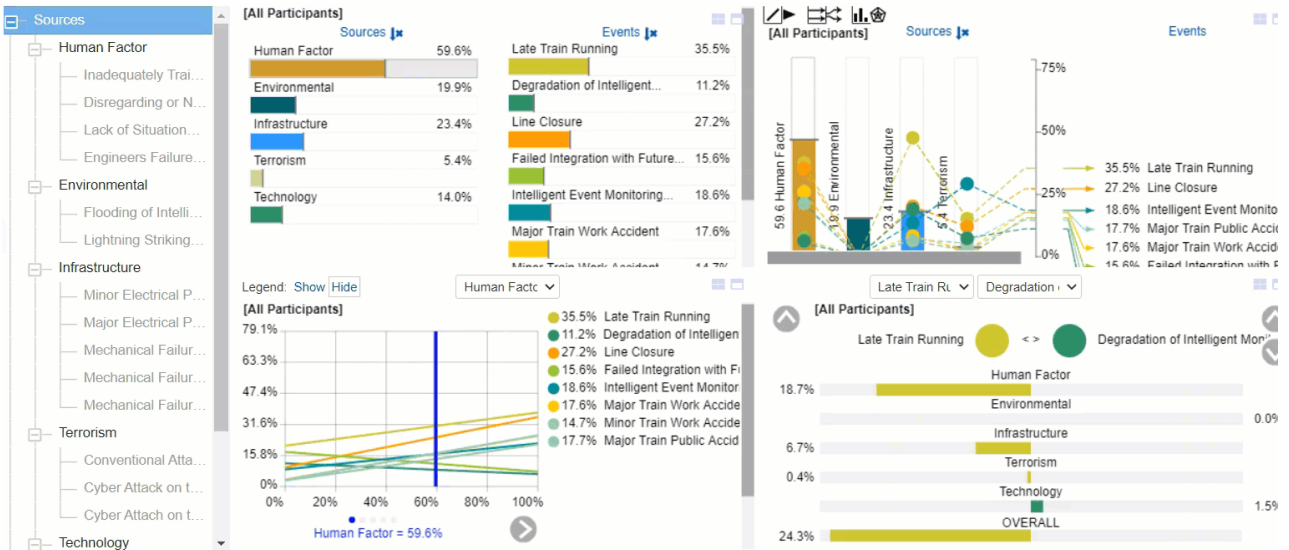
In Riskion, we refer to **threats, causes, hazards, and sources** interchangeably. While they may have slightly different nuances depending on the context in which they are used, they serve the same purpose -- they are all threats/sources of risk (for Risk Events) or sources of opportunity (for Opportunity Events).

In our sample model, we are using the terminology "Source(s)".

By default, four sensitivities are displayed as shown below:



You can temporarily alter the relationship between the events and their sources by dragging the bars/line (if applicable) on one sensitivity and it will be reflected on other sensitivities.



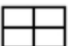

After temporarily changing the likelihoods of one or more of the sources, you can press the  reset icon.

You can show the local and global source's likelihoods on the Sources Hierarchy at the right using the Local-Global buttons:

Sources	All Participants	
	Local	Global
<b>Sources</b>		
Human Factor	59.58%	59.58%
Inadequately T...	10.47%	6.24%
Disregarding o...	45.18%	26.92%
Lack of Situati...	15.42%	9.19%
Engineers Fail...	13.97%	8.32%
Environmental	19.94%	19.94%
Flooding of Int...	2.03%	0.4%
Lightning Striki...	1.08%	0.22%
Infrastructure	23.38%	23.38%
Minor Electrica...	19.22%	4.49%
Major Electrica...	7.91%	1.85%

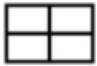
You can hide the Sources Hierarchy at the left using 

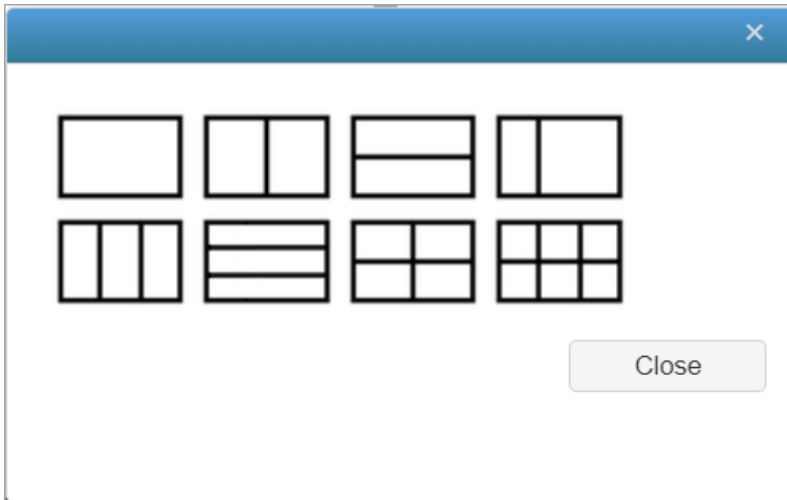
Click  to show/hide the toolbar options:

		Filter events: Show all events	Decimals: 1	Sort Sources by: None	Sort Events by: Priority	<input type="checkbox"/> Active Sorting	<input type="checkbox"/> Show Components
---	---	-----------------------------------	----------------	--------------------------	-----------------------------	---	--

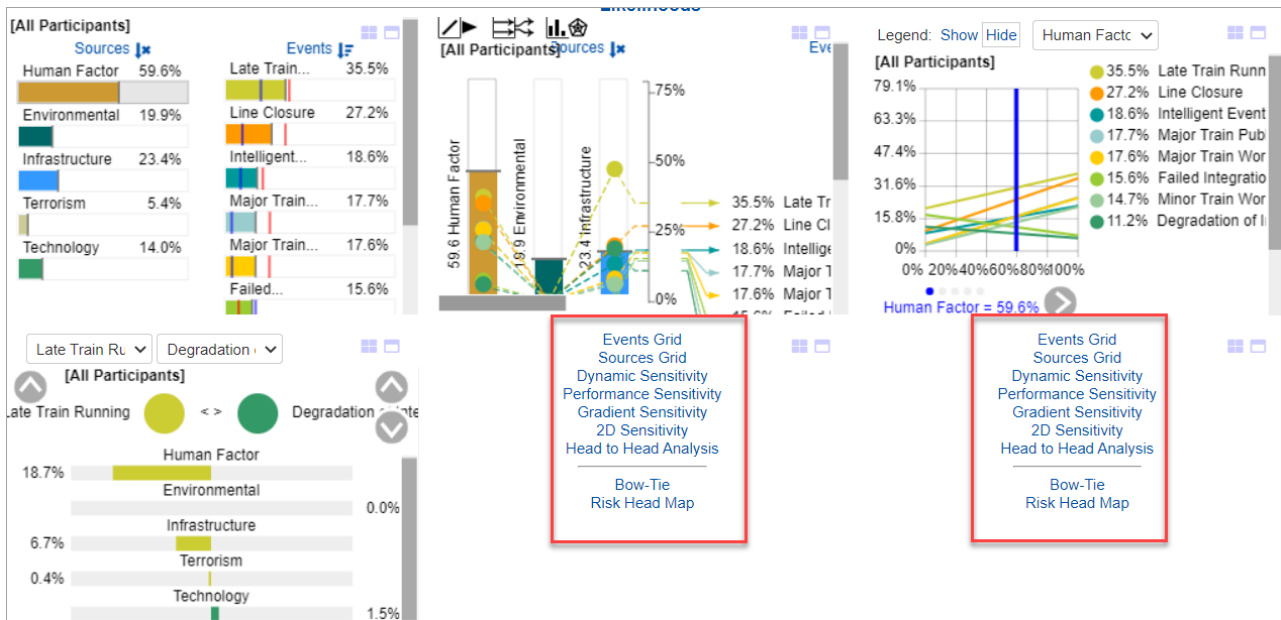
**DIDN'T SEE WHAT YOU ARE LOOKING FOR?** Try enabling the **Advanced Mode** switch at the bottom of the page, this will show the advanced options on this page.

The options available can be specific to a sensitivity.

Click  to select the layout how the sensitivities and/or grid will be displayed:



If you select the 6-widget layout, you will be able to select additional results widget:



## Select Participants and Groups

You can select to display results for **one** participant or group using



Clicking the  button will open a window where you can select a participant or a group.

You can use the prev  and the next  buttons to cycle through each participant or group.

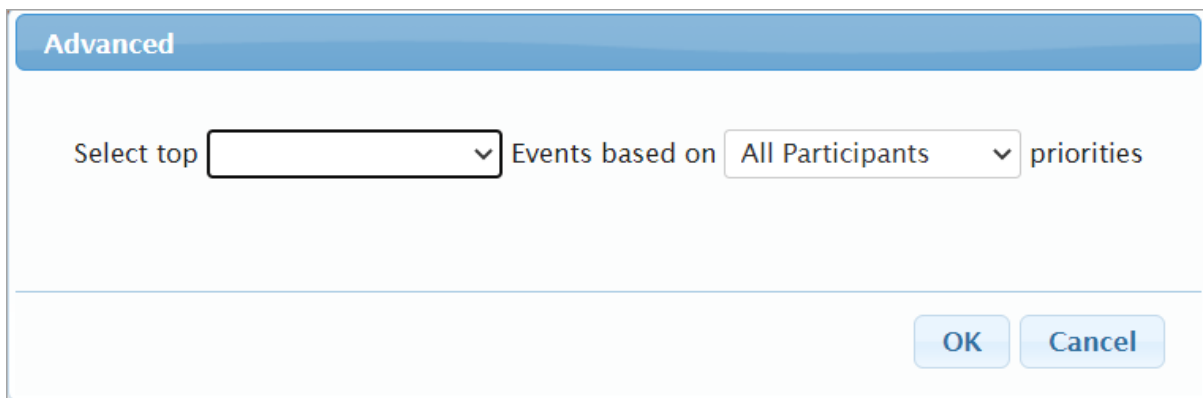
## Filter Events

By default, all events are displayed.



You can select to display the top or bottom 5, 10, or 25 events based on the "All Participants" group likelihoods.

The Advanced filter, allows you to select a specific number for the top N, and base it on another group or participant.



The select /deselection option, allows you to check/uncheck the events.

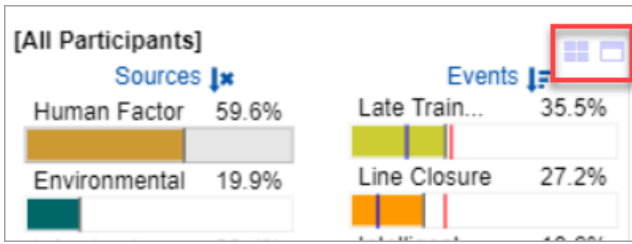
The filter by events attributes, filter the events base on the attributes specified on the Events page.

The show risks only / Show opportunities only are applicable for the Mixed model where events can be Risk or Opportunity.

## Advanced Mode Options

### 4. Change or Maximize Widget

Two icons are displayed to the top right of each widget:



Clicking the first icon will show the list of all the available widget, simple click the widget you want to select:

- Events Grid
- Sources Grid
- Dynamic Sensitivity
- Performance Sensitivity
- Gradient Sensitivity
- 2D Sensitivity
- Head to Head Analysis

---

- Bow-Tie
- Risk Head Map

Clicking the second icon will open a modal where you can see the maximized view of the currently displayed widget.

---